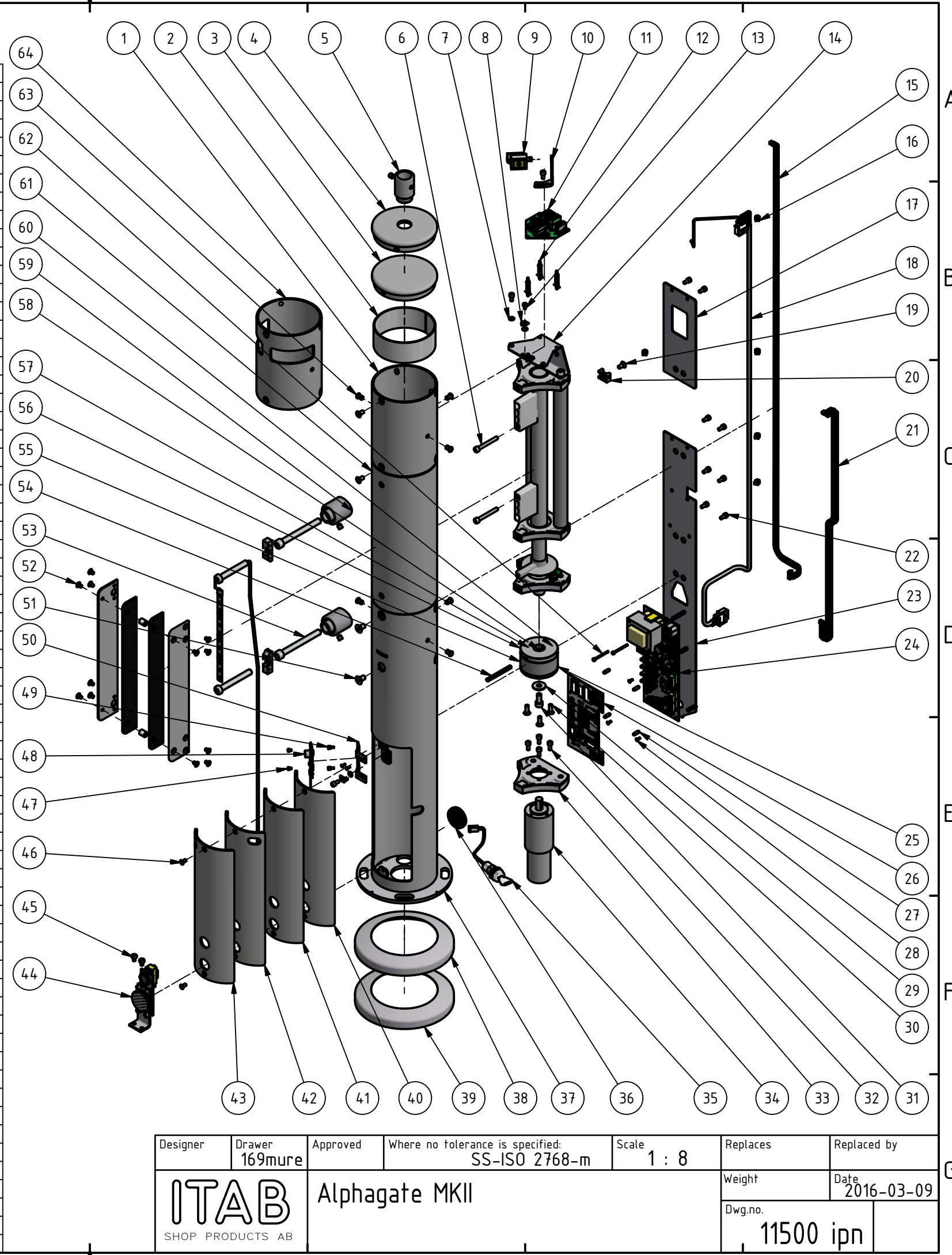


ALL MATERIAL MUST BE RoHS COMPLIANT

This drawing is the property of ITAB Shop Products and shall be returned to us upon request. It may not be used to harm the interests of ITAB Shop Products.

Item	Qty	Title	Material	Part number
64	1	Upper Tube Radar	DIN 2393	10312
63	6	End caps black IKPT 107 S	-	10752-50
62	2	Screw M3x35 MC6S gal.	Galvanized Steel 8.8	10431-30
61	1	Barrel standard		29098
60	3	Ball RB-15,875/G20W	Chromium steel AISI 52100	29039-01
59	2	Spigot R60 Assembly		29160
58	1	Slid bearing Ø20xØ23x15	-	10317-90
57	3	Spring Ø2xØ14.5x33 DIN2098	SS 1774-05	29038-01
56	1	Connection of axle	SS 1914	10640-80
55	1	Connection of between part	SS 1914	10639-80
54	1	Spiral Spring Pins Ø6x60 "Prum"	Spring Steel	10656-80
53	2	Screw MC6S M10x100 gal.	Steel 8.8 Galvanized	29025-01
52	1	LED kit glass arm		11368-60
51	6	Screw M8x14 F6S A2	Stainless Steel A2	29014-01
50	1	Attachment to the child safe pc cards	DC01	10358-30
49	2	6 Kant Abutment Screw DSS M3x5x5	Steel	10596-04
48	1	Childsafe sensor		10596-00
47	2	Screw M3x4 DIN 912 gal.	Galvanized Steel 8.8	10596-05
46	2	Screw MKFX A2 M5x10 A2	Stainless Steel A2	29027-01
45	2	Screw M5x8 DIN7985	Steel 4.8 Galvanized	29019-01
44	1	PEC and Reflex		29140-01
43	1	Lower Tube Lid Child Safe Right	DIN 2393	10359
42	1	Lower Tube Lid Child Safe Left	DIN 2393	10360
41	1	Lower Tube Lid	DIN 2393	10542
40	1	Lower Tube Lid	DIN 2393	10304
39	1	Foot Cover Alphagate Chrome		23611-01
38	1	Foot Cover Alphagate		10400
37	1	Lower Tube Standard		10300
36	1	Cable Gland f-1210	Rubber	075081
35	1	Key Switch Assembly		29152-01
34	1	DC Motor Complete		29107-01
33	1	Motor Disk	EN AC 46000	10519
32	4	Screw DIN 912 M5x12 gal.	Galvanized Steel 8.8	071100
31	1	Screw MC6S M8x18 gal.	Steel 8.8 Galvanized	10642-80
30	3	Screw F6S M6x14 A2	Stainless Steel A2	29006-01
29	1	Washer 8.4*24*2 DIN 9021	Galvanized Steel	10643-80
28	5	Screw M3x8 DIN965	Steel 4.8 Galvanized	080391
27	4	Distans 7 mm	Plastic	10176-00
26	1	Plate User Interface Assembly		10336-99
25	1	Connection of motor	SS 1914	10641-80
24	1	Controter board		10324-00
23	1	Back Plate		10305
22	10	Screw M5x10 DIN912	Steel 8.8 Galvanized	29008-01
21	1	Coullisse Cables 610mm 8-core kpl.		10327-00
20	1	Screw mount cable tie holder	-	10357-50
19	7	Screw M6x12 F6S A2	Stainless Steel A2	29016-01
18	1	Power Cable Assembly		10333-00
17	1	Back Plate Upper	DC01	10356
16	5	Cable Ties 142x3,6 natural	Elfa 55-037-84	073131
15	1	Top-Board Cables 1080mm 10-core kpl.		10330-11
14	1	Alphagate drive unit		10599-90
13	1	Screw MRX M4x8 gal.	Steel 4.8 Galvanized	29020-01
12	3	Locked circuit board support 4.8 (48-913-39)	-	29043-01
11	1	Draft Top Board		10326-00
10	1	Radar Bracket	DC01	10375-30
9	1	Radar CGS-1 2G including cable	-	12003-00
8	2	Assault Bleck	DC01	080134
7	3	Serrated Lock Washers M5 DIN 6798 AZ	Spring steel galvanized	080053
6	2	Screw M6*50 DIN612	Galvanized Steel 8.8	29017-01
5	1	Clamp power feed Assembly		29131-01
4	1	Lid Cable Pipe		29138
3	1	Top lid		29104
2	2	Radar Cover White Plastic	POM White	29136-01
1	1	Upper Tube Std	DIN 2393	10311



Designer	Drawer	Approved	Where no tolerance is specified:	Scale	Replaces	Replaced by
	169mure		SS-ISO 2768-m	1 : 8		
			Alphagate MKII		Weight	Date
					2016-03-09	
					Dwg.no.	
					11500 ipn	