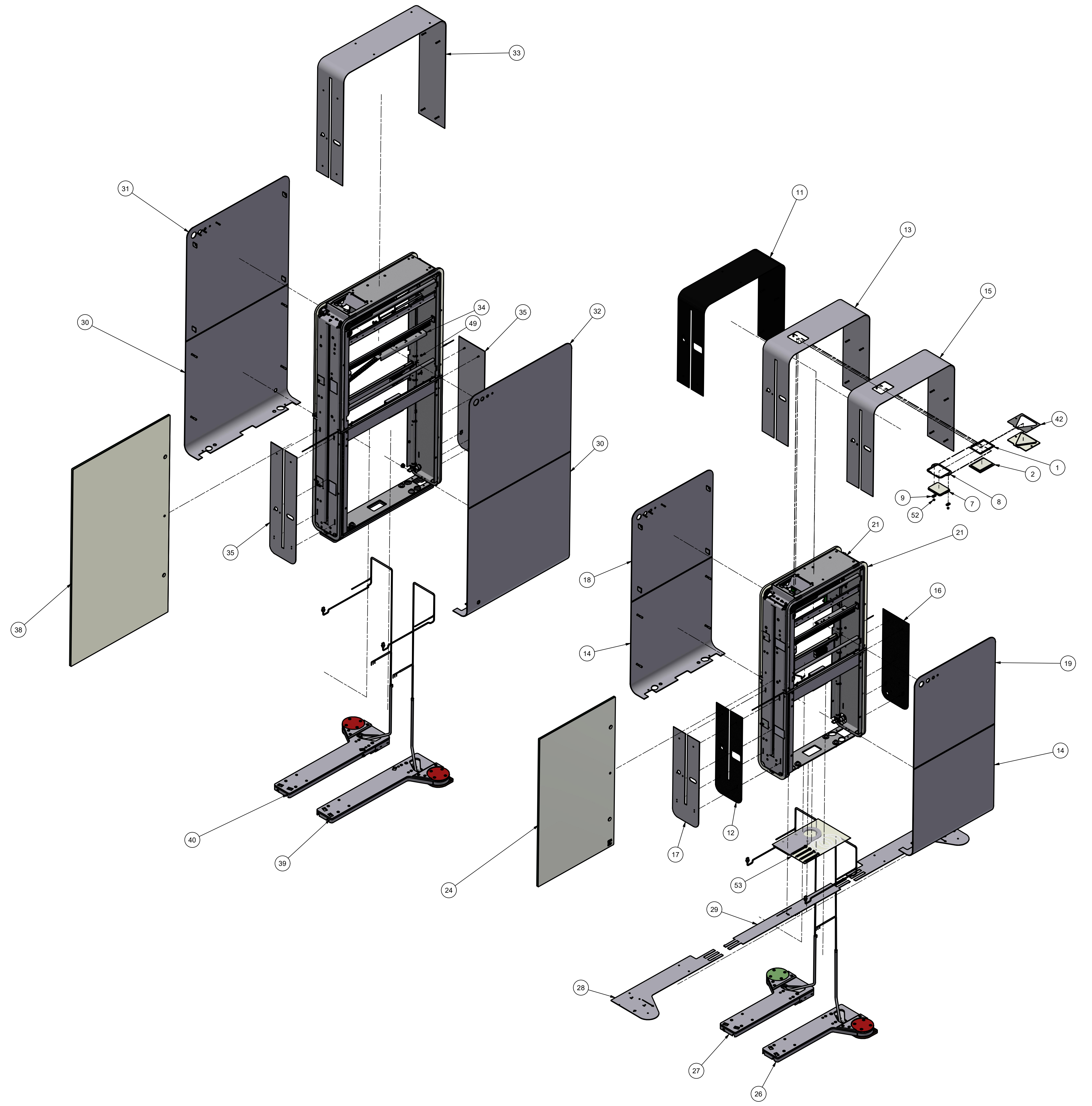


ALL MATERIALS MUST BE REHNS COMPLIANT



| REV | DESCRIPTION | DATE | APPROVED |
|-----|---------------|------------|----------|
| A | First release | 2024-04-24 | Stefan |

| | | | | |
|----|----|---------------------------------------|----------------------------------|---------------|
| 54 | 4 | Lock Washer 4,3 | ZP Serrated - DIN 6798 FORM A | 091324 |
| 53 | 1 | Accessory kit | MPB | 090111 |
| 52 | 2 | Washer nut nat M4x0,7 H 4,1 mm | | 080581 |
| 51 | 4 | 2456-026640-2824-Industrias | | 080545 |
| 50 | 8 | Nut nylock M6 DIN 982 | | 080409 |
| 49 | 38 | Nut M4 | ZP Locking - DIN 985 | 080406 |
| 48 | 1 | Label, ITAB Contact QR-code | | 072501 |
| 47 | 12 | Washer 5,3x15x1,2 | ZP - DIN 9021 | 071605 |
| 46 | 8 | Washer 10,5x30x2,5 | ZP - DIN 9021 | 29029-01 |
| 45 | 8 | Screw M10x25 | 12.9 PLAIN FULL THREAD - DIN 912 | 29012-01 |
| 44 | 1 | Product Label 76x59,5 | | 27419-01 |
| 43 | 2 | Cable Earth Door to chassi assem | | 14002-90 |
| 42 | 1 | Top scanner window with gasket | SigmaGate | 13767-90 |
| 41 | 2 | Protective plug black | | 12884-50 |
| 40 | 1 | MPB SigmaGate 1200 RH | | 12875-22 |
| 39 | 1 | MPB SigmaGate 1200 LH | | 12875-21 |
| 38 | 1 | Plastic arm 1200x679.5x10 | SigmaGate 1200 | 12874-50 |
| 37 | 1 | Base plate bracket | SigmaGate 1200-1170 | 12873-20-9005 |
| 36 | 1 | Plinth weld | SigmaGate 1200-1170 | 12870-20-9005 |
| 35 | 1 | Sigma Gate 1200 Chassi assembly | Sigma Gate 1200 | 12825-90-9005 |
| 34 | 1 | SigmaGate 1.2 Chassi assembly SS | Sigma gate 1.2 SS | 12825-90 |
| 33 | 1 | Top side plate covered weld | SigmaGate 1200-1170 | 12817 |
| 32 | 1 | Door steel plate A weld | SigmaGate 1200-1170 | 12816 |
| 31 | 1 | Door steel plate B weld | SigmaGate 1200-1170 | 12813 |
| 30 | 2 | Base plate weld | SigmaGate 1200-1170 | 12805 |
| 29 | 1 | Sigma drilling template middle | SigmaGate | 12650-93 |
| 28 | 2 | Sigma drilling template outer | | 12650-92 |
| 27 | 1 | Basis for mechanical panic exit right | | 12650-22 |
| 26 | 1 | Basis for mechanical panic exit left | | 12650-21 |
| 25 | 2 | Disc springs DS-S 12X6,2X0,6 | | 12587-86 |
| 24 | 1 | Glass Door | Exit Gate | 12550-80 |
| 23 | 1 | Base plate bracket | | 12544 |
| 22 | 2 | Bracket for lock | SigmaGate | 12530-50 |
| 21 | 1 | SigmaGate Chassi assembly | | 12525-90 |
| 20 | 2 | Bracket for lock | | 12520-50 |
| 19 | 1 | Door steel plate A weld | | 12511 |
| 18 | 1 | Door steel plate B weld | | 12509 |
| 17 | 1 | Lower side plate A weld | | 12507 |
| 16 | 1 | Lower side plate B weld | | 12505 |
| 15 | 1 | Top side plate scanner weld | | 12503 |
| 14 | 2 | Base plate weld | | 12500 |
| 13 | 1 | Top side plate scanner weld | Primark | 12321 |
| 12 | 1 | Lower side plate A weld | | 12179 |
| 11 | 1 | Top side plate covered weld | | 12177 |
| 10 | 2 | Radar CGS-1 2G including cable | | 12003-00 |
| 9 | 2 | Top Cap Glass holder assembly | | 11843-90 |
| 8 | 1 | Top Cap sealing | ScanMaster Upright 2.0 | 11841-40 |
| 7 | 1 | Top scanner window Glass | ScanMaster Upright 2.0 | 10994-52 |
| 6 | 1 | Gate Master 2.0 CPU | | 10969-90 |
| 5 | 4 | Screw M5x10 | A2 - DIN 7991 | 10476-70 |
| 4 | 1 | Entrapment Breaker Board | SigmaGate | 100-003-044 |
| 3 | 1 | Motor cable PCB to PCB 180mm | SigmaGate1 | 100-003-004 |
| 2 | 1 | Panel | Scanner window | 100-002-331 |
| 1 | 1 | Gasket | Scanner Window | 100-002-129 |

| Item | Qty | Title | Specification | Part number |
|-----------------------|-----------|--------------------------|----------------------------------|-------------|
| View orientation | Drawer | Sheet | Where no tolerance is specified: | Scale |
| stekar1 | 1 (1) | SS-ISO 2768-m | 1 : 10 | Cut length |
| Compare | Weight | Date | | |
| | 296.64 kg | 2024-03-12 | | |
| ITAB | | SigmaGate STD LH SCO PTD | | Rev. |
| ITAB Shop Products AB | | SigmaGate1 | | A |

PROPRIETARY AND CONFIDENTIAL. The information contained in this drawing is the sole property of ITAB Shop Products AB. No part of this drawing may be reproduced, stored in a retrieval system, or transmitted in any form or by any means, electronic, mechanical, photocopying, recording, or otherwise, without the written permission of ITAB Shop Products AB. The drawing shall be returned to ITAB Shop Products AB immediately upon request.