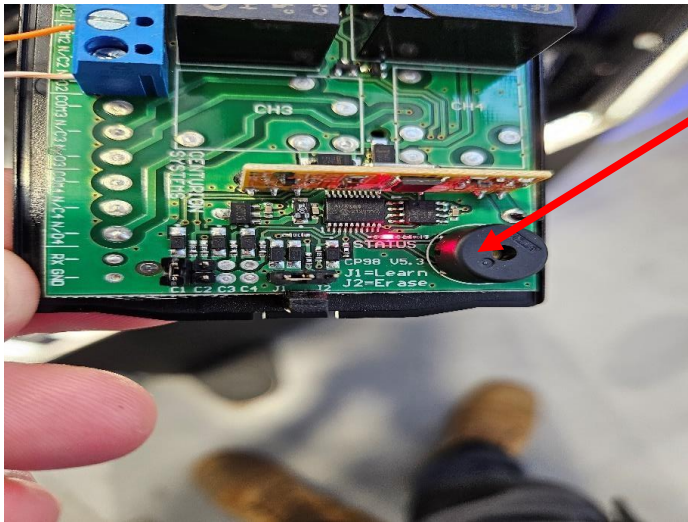


Remote Installation

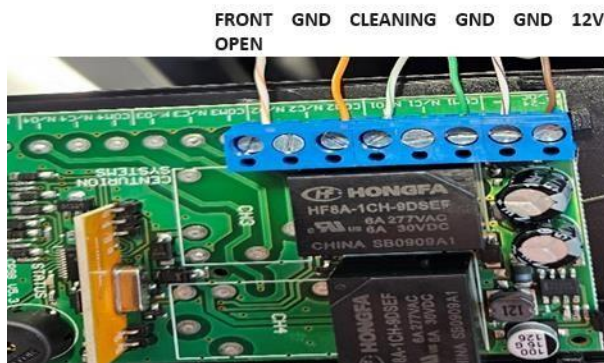
Connecting Power

1. Open the bottom rear lower tube lid on the gate, place in same location as PEC is often fitted.
2. Connect 12v on gate to "+" positive on receiver.
3. Connect Ground on the gate to "-" negative on the receiver.
4. This will power the receiver and light the Status indicator.



Relay 1 (Latched) Gates will remain open until the button is pressed a second time to close

1. Connect Common on receiver to Ground on gate.
2. Connect N/O on receiver to Cleaning on gate.
3. This enables the gate to be locked in the open position.



Pairing Remotes

Before you start

- The gate receiver can be programmed to open the gates using button 1, 2, 3 or 4 on any paired remote. We have nominated button 1 for Coles nationwide.
- Each gate set will have its own receiver that can only be switched by the programmed remotes for this receiver.
- The first remote you program becomes your Master Remote.

Programming Buttons 1-4 (Latched)

1. **Disconnect** the power to the receiver.
2. Once the receiver is powered down, place a jumper across the CH2 pins and a jumper across J2 and the pin next to it.
3. Once the jumpers are in place, **power the receiver back up** and hold down button 1 on the master remote for 3 seconds.
4. This will send the receiver into "channel configuration" mode the LED will flash in 4 different sequences.
5. It will flash once then twice then three times than four times it will then continue to repeat this cycle until a jumper is removed.
6. The sequence you want to see is two flashes, when the LED flashes twice remove the jumper across "J2"
7. This will now allow button 1 to latch the gate open when pressed.
8. Repeat steps 1-7 for the remaining remotes.